

New Software Releases

As part of the software licence PilotAware users will be provided with regular software maintenance releases, updates and certain feature enhancements

PilotAware users will be informed via the forum, forum.pilotaware.com, and by email of new software updates for maintenance releases, improvements or new functionality.

Manual Software Upgrade

If the current software that you are running is earlier than Version 20160511 or if you need to undertake a manual software upgrade this can be achieved as follows.

SD Card Formatting

Firstly, you will need to download the SD Card Formatter. On your PC browser go to the following website:

https://www.sdcard.org/downloads/formatter_4/

Download the appropriate Windows or Mac version of the SD card formatter. Click “SD Formatter for Windows Download” or “SD Formatter for Mac Download” from the menu on the left.

Next select the blue “Accept” button to download the software (SDFormatter4.zip). Double click the ZIP file to open it and run “setup.exe” (Windows) Click “Run” if you get a security warning at this point and follow the instructions on-screen.

Start the SD Formatter program.

Insert your micro SD card into your PC or MAC (normally using an SD Card adapter)
Select the drive letter representing the Micro SD card, usually this is E: or F: but do check, especially if you have other drives or USB sticks attached to your computer!

Click the “Option” button:

Select the FORMAT TYPE dropdown and choose **“FULL (Overwrite)”**:

Select the “FORMAT SIZE ADJUSTMENT” option and choose “ON”:

Click “OK”

Double check you have the correct drive letter for the Micro SD card and click “Format”

Click “OK” – it will usually take several minutes to format the card and once started you must not stop the process until you are informed that it is complete.

If the format appears to be complete in a few seconds or a couple of minutes, you probably have not selected “FULL (Overwrite)” which is necessary for the format to work correctly.

Exit the formatter when the format has finished, you do not need it once the formatting is complete.

Download The PilotAware Software

From the PilotAware forum downloads section here:

<http://pilotaware.lode.co.uk>

Selecting download the software which will download the latest version of the PilotAware software. The releases are named by year, month and date e.g.:

“PilotAware Release 20151030” is the version released on 30th October 2015.

This will be a ZIP file named similarly to the release. E.g.

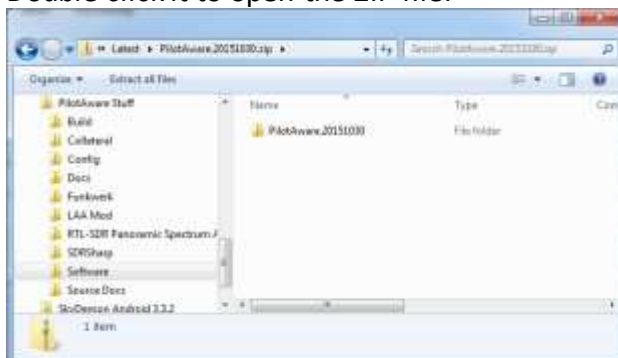
PilotAware.20151030.zip

Copying The Files to The Micro SD Card

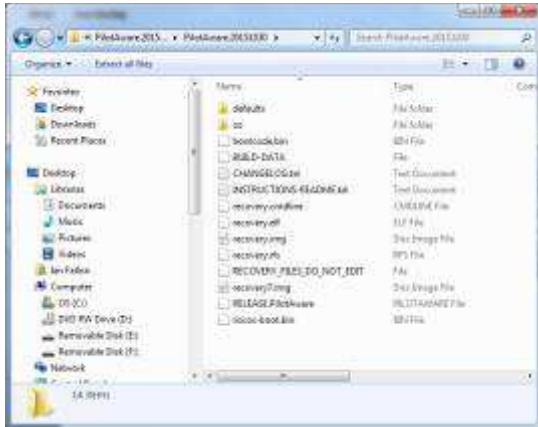
The PilotAware ZIP file should now be in your Downloads folder:



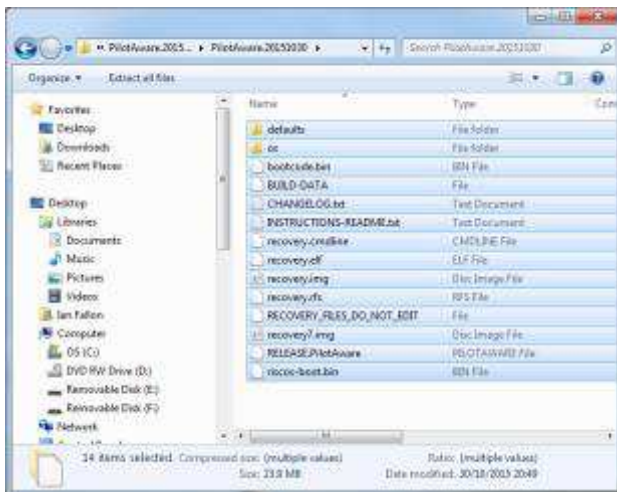
Double click it to open the ZIP file:



Double click the folder inside the ZIP file to show the contents:



Select ALL the files and subfolders in the folder NOT THE FOLDER ITSELF. You can do this by either clicking the first file, press and hold shift and click the last file, this will select all the files, let go of the shift key. Alternatively click one of the files, then hold CTRL and press A to select them all.



Drag all these files onto your Micro SD card's drive letter to copy them to your Micro SD card. Alternatively, right click on the highlighted files and select Copy, then left click on your Micro SD card Removable Disk icon and right click then select Paste.

The copy will take a couple of minutes. When it has finished, right click on the Removable Disk icon for your card and select "Eject". Physically remove the Micro SD card from your PC.

The MicroSD card can then be put back into your PilotAware, which can then be powered up again and will automatically run the new software. ***This will takes considerably longer (several 10s of minutes) to boot up than normal as the software configures itself so be patient and wait for the Wi-Fi to return.***

Note: After performing a manual software update you will have to go to the Configure screen and re-enter your original License Key as this will have been deleted during the card formatting process.

End of Document